

CORNELL

QS24 Service Doors

Model ESD11



Standard Construction Features

- Available for openings from 5' 0" to 12' 0" wide and from 5' 0" to 20' 4" high.
- Curtain & Hood - 24 gauge galvanized steel with exclusive GalvaNex™ finish in light gray.
- Bottom Bar & Guides - Designed of minimum 1/8" thick structural steel angle(s) factory powder coated gray, SpectraShield® 30-7192.
- Counter-balance Shaft - 4 1/2" diameter steel tubing with 1 1/4" steel inner shaft and counter-balance torsion springs for assisting operation.
- Endplate Brackets - Minimum 3/16" steel plate end covers factory powder coated gray, SpectraShield® 30-7192.



Practical Design Applications

- Distribution
- Industry
- Healthcare
- Retail
- Utilities
- Education
- Hospitality/Public Space

Benefits

- Powder Coating - is standard on exposed plain steel surfaces.
- Size Flexibility - each unit is built to exact opening size requirements.
- Compact Storage - curtain stores in an overhead coil that is totally supported by the side guides.
- Durability - commercial duty design.
- Maintenance - little to none.
- Repairs - job records are retained and parts are readily available.

Available Options

- Corrosion resistant ZRG galvanizing on exposed plain steel components
- Square hoods
- Cylinder or slide bolt locking
- Best 7 pin lock cylinders
- Bottom bar sensing edge for motorized units
- Double structural steel angle bottom bar
- Hot-dip galvanized steel bottom bar

QS24 Service Door Components

Brackets

Min. 3/16" steel plates that bolt to the guide assembly and support the counter-balance shaft and curtain.

Material & Finish: steel with SpectraShield® powder coating 30-7192 gray



Counter-balance Shaft

4-1/2" diameter outer shaft and 1-1/4" diameter inner shaft. This assembly supports the curtain and contains counter-balance torsion springs for assisting operation.

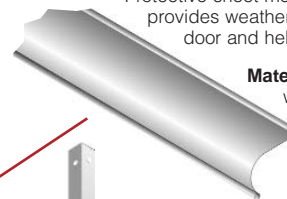
Material: steel



Hood

Protective sheet metal enclosure for the curtain that provides weather resistance at the head of the door and helps keep the brackets rigid.

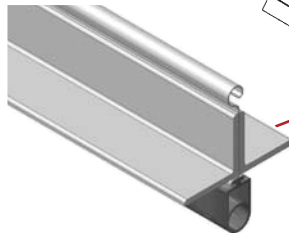
Material & Finish: galvanized steel with exclusive GalvaNex™ finish in light gray



Bottom Bar

2" x 2" x 1/8" structural steel angle attached to bottom curtain slat and provided with an astragal seal. Can be equipped with locking mechanisms.

Material & Finish: steel with SpectraShield® powder coating 30-7192 gray



Guides

Minimum 1/8" thick structural steel guide angles and minimum 3/16" structural steel wall mounting angle assembly that bolts to the wall and supports the entire door weight.

Material & Finish: steel with SpectraShield® powder coating 30-7192 gray



Curtain

Interlocking roll formed slats with endlocks riveted to ends of alternate slats to maintain slat alignment and prevent wear.

Material & Finish: galvanized steel with exclusive GalvaNex™ finish in light gray



Operation

Push-up operation shown. Hand chain and motors are available. Doors operate by rotating the shaft gear end.

The opposite end of shaft applies spring tension and is equipped with a spring adjusting wheel.

Product Standards & Options

Sizes and Mounting

- Fits finished openings from 5' 0" to 12' 0" wide and from 5' 0" to 20' 4" high.
- Units available for Face of Wall mounting conditions only.

Specified Windload

- Doors can be configured to withstand the full range of specific wind load requirements. Third party performance validation.

Production Leadtime

- QS24 doors are supplied on an expedited production program and are shipped in one to two weeks from date of order.

Operating Options

- Manual push-up available on doors through 10' 4" wide x 8' 4" high.

- Manual hand chain.
- Motor operation with belt-drive or gearhead operators, wall or vertical bracket mounted.

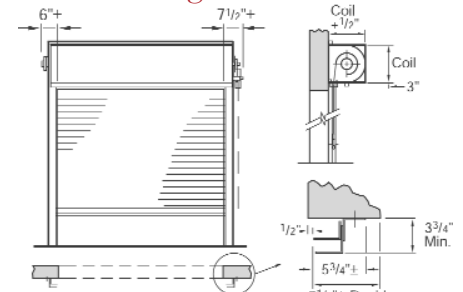
Locking

- Slide bolt locking is standard on push-up operated units, a padlockable chain keeper is standard on chain operated units.
- Locking options include coil side cylinder locks or coil or fascia side slide bolts.

Weathering

- Bottom bar astragal seal is supplied as standard.
- Guide weathering and a hood baffle are available options to provide full door perimeter weather-stripping.

Mounting & Clearances



Face of Wall Mounting Only
Maintains clearance of full opening, minimal exposed components.

CORNELL

SAFE AND SECURE

An ISO 9001:2000 Registered Company

Crestwood Industrial Park
Mountaintop, PA 18707
TEL 800.233.8366 • FAX 800.526.0841
Engineering Design Services: Ext. 551
Website: www.cornelliron.com
Email: cornell@cornelliron.com