

OnSet™ Conveyor Fire Door

Available with IntelliSet™ Full-Range Limit Protection

Efficiently Packaged for easy handling and installation; helps keep costs down and your project on schedule.

Pre-Assembly of the door into only three sections further reduces costly installation time and errors.

OnSet's Unique, Flexible Logic can tie directly to the conveyor control system, a central fire alarm system, or functions as a stand alone, re-settable fire door to meet all your application needs.

Exclusive IntelliSet™ Operation available to provide independent, full-range limit detection, with or without power, for the ultimate protection against smoke and fire losses.

Compact, Low Profile minimizes opening clearance requirements and allows easier installation in existing facilities.

The Cornell Name guarantees that you will receive the highest levels of quality, expertise and service.

Unmatched Support through an established, nationwide distributor network ensures Your Satisfaction.



Be Prepared at the OnSet™

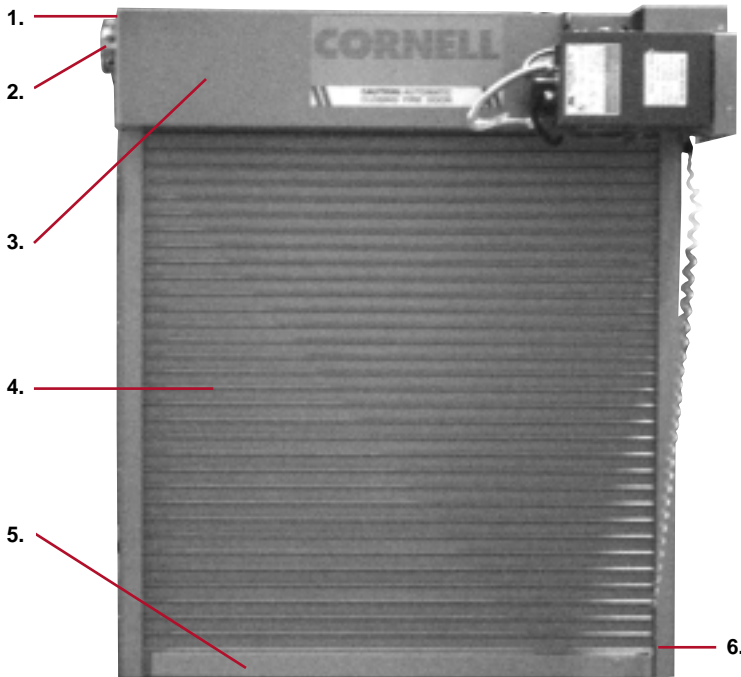
Secure your conveyor openings against unauthorized access, smoke and fire losses with the OnSet Conveyor Fire Door from Cornell Solutions. Each OnSet is pre-assembled, protectively packaged, and individually crated to assure ease of handling and help keep your project on budget and on schedule. If additional protection against false closings from temporary power loss is needed, OnSet's exclusive IntelliSet™ operation can provide independent, full-range limit detection, with or without power. If manually raised during a power outage, only IntelliSet still allows the door to close upon alarm. Plus, resetting limits after operation is never required. From installation to operations, you're always prepared at the OnSet.

CORNELL
New Solutions Since 1828

OnSet™ Conveyor Fire Door Components

CORNELL
New Solutions Since 1828

100 Elmwood Drive • Mountaintop, PA 18707
TEL 800.OEM.7034 • FAX 570.715.0665
Website: www.cornellsolutions.com
Email: info@cornellsolutions.com



Maximum Size

OnSet Conveyor Fire Doors are built to order to fit openings up to 10 feet wide, with a maximum height of 6 feet.

Head Assembly:

These components will be supplied preassembled to aid in installation.

1. Brackets

Powder coated, reinforced steel plates with permanently lubricated ball bearings at rotating points to support shaft assembly and form end closures.

2. Shaft Assembly

3" minimum diameter outer shaft and 3/4" minimum inner shaft assembly supports the curtain and contains counter-balance torsion springs to assist operation.

3. Hood

Light gray polyester enamel coated hood and motor mechanism core, 24 gauge galvanized steel with reinforced top and bottom edges. Motor Operator, see Operator information below.

4. Curtain

Interlocking flat-faced slats, 1 1/2" high by 1/2" deep, 22 gauge galvanized steel with light gray polyester enamel coating on curtain and (5.) **steel angle bottom bar**. Stainless steel available. 1/2" deep bottom bar allows closer conveyor belt installation, reducing the risk of stuck baggage.

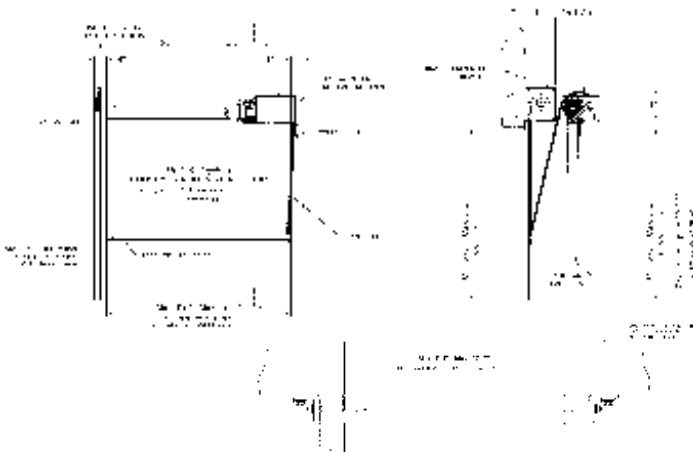
Guide Assembly:

These components will be supplied preassembled to aid in installation.

6. Guides and Wall Angles

All components will have a light gray baked-on polyester powder coat finish. Guides will be 12 gauge formed steel and wall angles will be a 2" x 2" x 1/4" structural steel angle that extends full height of the door.

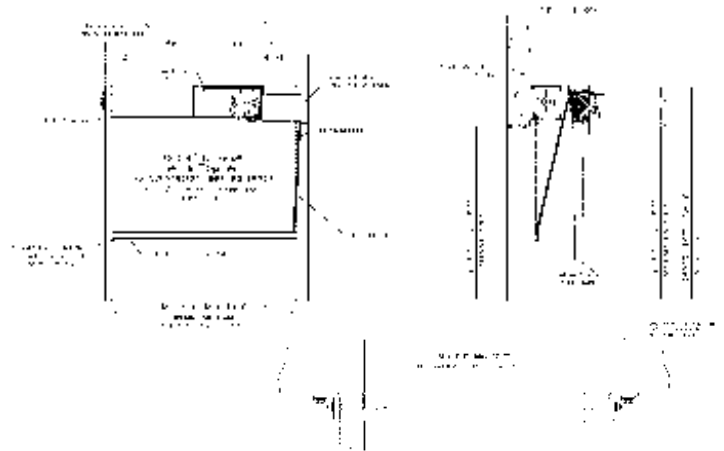
Operation



OnSet™ System

Operator has normal power: Melting of fusible links will cause door to gravity close. Upon replacement of fusible links, the door operator automatically resets and is ready for operation.

Operator does not have normal power: During a power outage, the door will remain in the open position. Melting of fusible links will cause the door to gravity close automatically. Upon replacement of fusible links, the door can be operated by auxiliary hand chain. After power is restored, door operator automatically resets and is ready for operation.



OnSet™ System with IntelliSet™ Operation

Operator has normal power: Local detectors including fusible links or alarm signal will cause door to gravity close. Upon clearing of alarm signal or replacement of fusible links, the door operator automatically resets and is ready for operation.

Operator does not have normal power: Battery back-up will prevent closing of door due to power failure for 12 hours. Door will respond to alarm signal during 12 hour period. Upon clearing of alarm, door can be operated by using auxiliary hand chain. The door is fully reset and will respond to any alarm condition. After 12 hours without normal power, the door will gravity close automatically. When normal power is restored and alarm cleared, door operator automatically resets and is ready for operation.